



THE SHOE THAT GRIPS®

THE ORIGINAL SLIP-RESISTANT SHOE

25 YEARS AND STILL GRIPPING

Aurora
page 6



INTRODUCING
ACE WORK BOOTS™

See inside



100%
SATISFACTION
GUARANTEED!

See order form for details.



THE SHOE THAT GRIPS®



Barcelona
 by topcrews™
 see page 22

THE Original

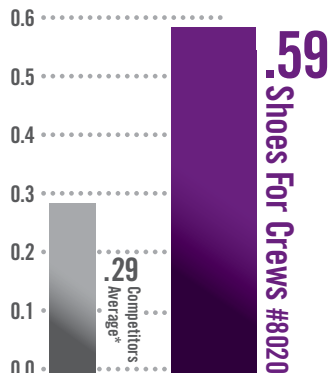
slip-resistant shoe

- 4** ATHLETIC
- 14** CASUAL
- 20** TOPCREWS™
- 24** ACCESSORIES
- 28** DRESS
- 36** WORK
- 45** ACE WORK BOOTS™
- 48** CLEARANCE
- 50** VALUES UNDER \$30

SFC
OUT-
GRIPS

THE COMPETITION

Independent Slip-Resistant Testing by Precision Testing Laboratories*



*See page 26 for 2012 test details

OUR MISSION is to provide our customers with the Best Safety Footwear available, anywhere.

IT'S NO SURPRISE why we've been a trusted leader in foodservice safety footwear for more than 25 years. We research, design, engineer and manufacture every shoe we sell.

WE KNOW that you have choices, which is what drives us to deliver you excellence in comfort, style, durability and slip resistance.



TOP SAFE STYLES
 under
\$30

See page 50-51 for tremendous values

SEE PAGES 45-47



INTRODUCING
ACE WORK BOOTS™



TAKE A WALK IN OUR SHOES
RISK-FREE FOR 60 DAYS
 If you're not happy with your shoes for any reason, return them within 60 days of purchase. See order form for details.

Call or click shoesforcrews.com
24/7 to order today! 1.800.523.4448
 Hablamos Español! Ordene hoy! shoesforcrews.com/es

ATHLETIC

POWER THROUGH YOUR DAY

FORCE
page 5



“THE OTHER DAY
GREASE HAD GOTTEN
ON THE **FLOOR...**
I WAS THE ONLY ONE
NOT SLIPPING...
THANK YOU FOR MAKING THESE
AMAZING SHOES!”

TIMOTHY W.
OWNER, WARE, MA



Force

Make your workday a slam dunk with Air Piston Technology high tops. Work hard, play hard. In these high tops, you'll begin and end every shift as cool as can be. Water-resistant, genuine leather combines with our patented SFC Mighty Grip outsole for a multipurpose athletic shoe. This ultra-hip design offers additional ankle support, removable cushioned insoles and a padded heel and collar for greater comfort.

Men's: 8044 Black
Medium 7-11½, 12, 13, 14

CORPORATE
PRICE

\$59⁹⁸

RETAIL PRICE \$88.49
SAVE 32%



AIR PISTON
TECHNOLOGY



Energy

Feel energized: Cradle your feet in unbelievable comfort.

This water-resistant, genuine leather style has a rubber platform measuring 1¼". Its patent pending lightweight torsion bar is designed to improve balance and stability, while a steel shank adds arch support. All of this combined with our patented SFC Mighty Grip outsole.

Women's: 9042 Black
Medium 4, 5-9½, 10, 11
Wide 6½-9½, 10, 11

CORPORATE
PRICE

\$59⁹⁸

RETAIL PRICE \$88.49
SAVE 32%



Models featured throughout the catalog are contracted professionals and are not the actual individuals who supplied the testimonials.

GET THE SHOE THAT GRIPS | 1.800.523.4448 | SHOESFORCREWS.COM

STEP INTO COLOR!

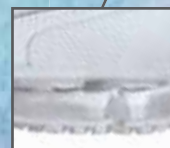
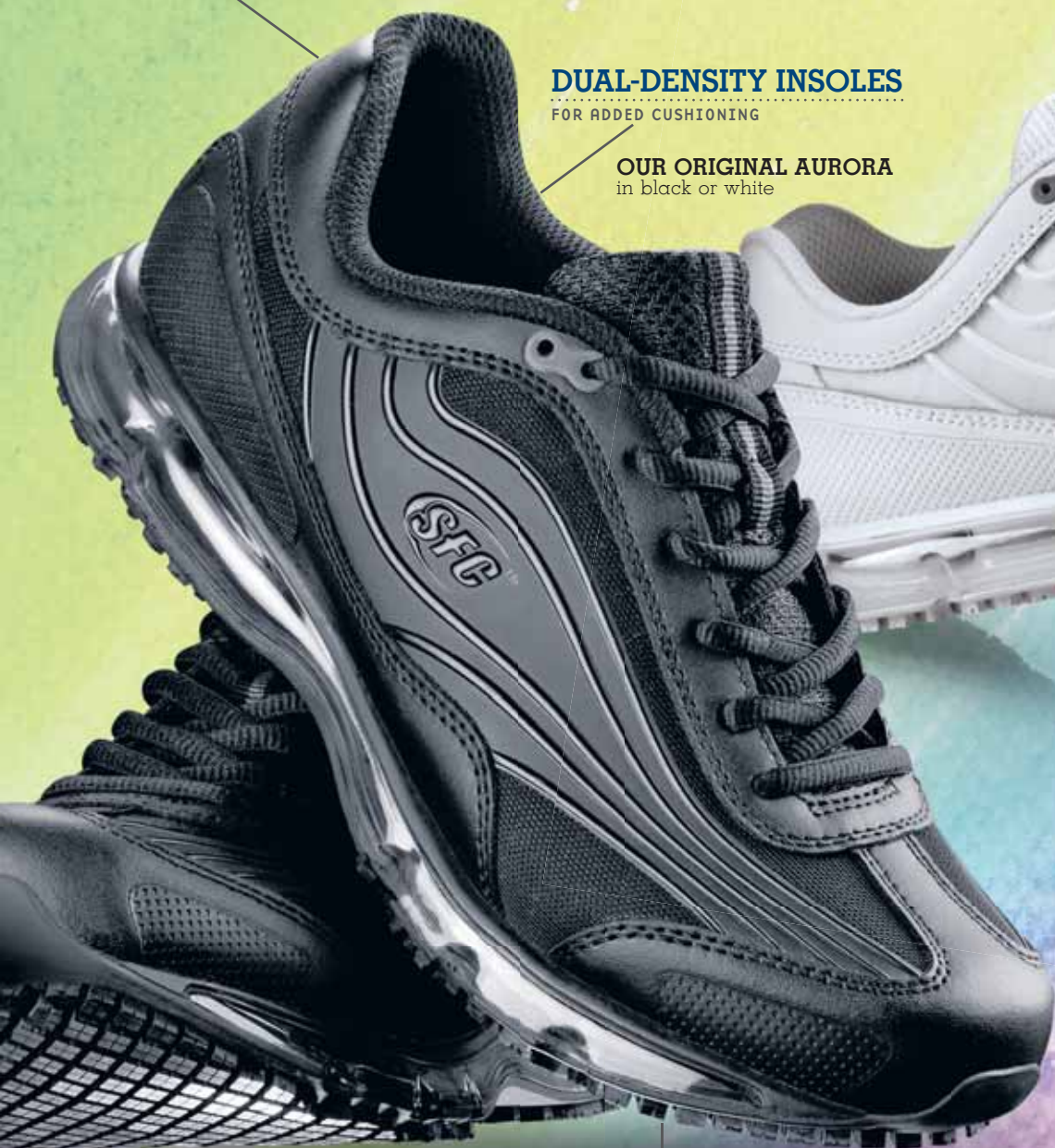
WITH OUR TOP-SELLING WOMEN'S AURORA

PADDED TONGUE AND HEEL
FOR ADDED COMFORT ON THE JOB... OR ANYWHERE

DUAL-DENSITY INSOLES
FOR ADDED CUSHIONING

OUR ORIGINAL AURORA
in black or white

ADDITIONAL COLORS
now in gray with blue or pink accents



AIR PISTON TECHNOLOGY

Aurora
Sporty, sleek and designed with Air Piston Technology to cushion your every step. The Aurora features dual-density insoles for added cushioning, ventilation sidewalls and a padded heel and tongue for extra comfort. Our patented SFC Mighty Grip outsole provides maximum traction, while the Air Piston Technology is designed to reduce stress on joints. Made of genuine leather.
Women's: 9043 Black, 9143 White
9242 Gray/Pink, 9243 Gray/Blue
Medium 5-9½, 10, 11
Wide (black only) 6½-9½, 10, 11

CORPORATE PRICE
\$54⁹⁸
RETAIL PRICE \$83.49
SAVE 34%

SLIP RESISTANT
PATENTED SFC MIGHTY GRIP OUTSOLE PROVIDES MAXIMUM TRACTION

INCREASED COMFORT
FULL OUTSOLE AIR PISTON TECHNOLOGY DESIGNED TO REDUCE STRESS ON JOINTS

Revolution
Spring into action with Air Piston Technology. This water-resistant shoe features Air Piston Technology, which is designed to reduce stress on joints. Features include nylon mesh accents, a padded collar, removable cushioned insoles, a stitch-reinforced toe and our patented SFC Mighty Grip outsole. Enhanced heel counter offers more support. Made of leather and man-made upper.

Women's: 9041 Black, 9141 White
Medium (4 black only), 5-9½, 10, 11
Wide 6½-9½, 10, 11
CORPORATE PRICE
\$49⁹⁸
RETAIL PRICE \$78.49
SAVE 36%



Shredder

A sporty shoe that is safe for work yet stylish for play.

Get a grip in the most demanding workplace with our patented SFC Mighty Grip outsole, stitched 360° for greater durability. This water-resistant, genuine leather style features removable cushioned insoles, a stitch-reinforced toe and an enhanced heel counter for more support.

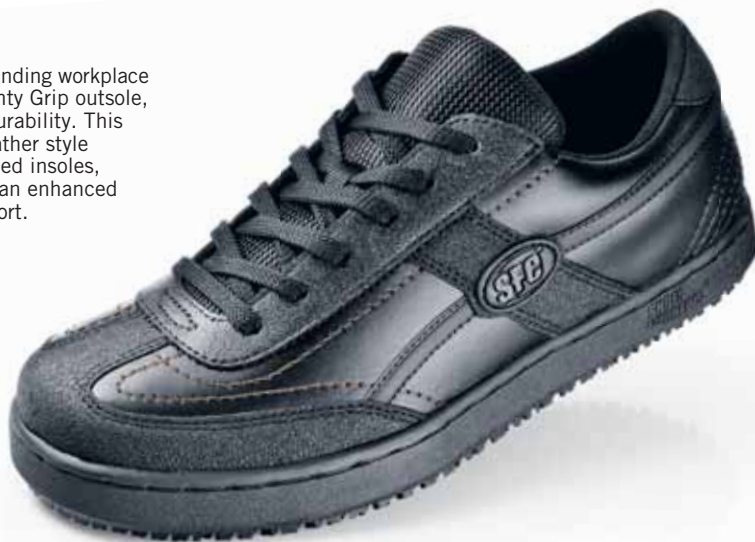
Men's: 6051 Black
Medium 7-11½, 12, 13, 14

Women's: 7051 Black
Medium 5-9½, 10, 11

CORPORATE PRICE

\$44⁹⁸

RETAIL PRICE \$66.49
SAVE 32%



Falcon

This breathable, cross-trainer-inspired shoe delivers maximum comfort.

Combat your longest shifts in these genuine leather shoes that feature our patented SFC Mighty Grip outsole. Features include removable cushioned insoles, a padded ankle collar and an enhanced heel counter for more support. Made of genuine leather.

Men's: 6007 Black, 6107 White
Medium 7-10½, 11, (11½ black only)
12, 13, 14, (15 black only)
Wide (black only) 8-10½, 11, 12, 13, 14

Women's: 7007 Black, 7107 White
Medium 4, 5-9½, 10, 11, (12 black only)
Wide (black only) 6½-9½, 10, 11

CORPORATE PRICE

\$34⁹⁸

RETAIL PRICE \$53.49
SAVE 35%



COMFORTABLE, EASY TO WEAR STYLES!

Eastside

Comfort combined with the support of a running shoe.

Move through a full day's work in casual comfort. This popular water-resistant, genuine leather design combines our patented SFC Mighty Grip outsole with cushioned insoles and a padded collar. Look good and feel great!

Men's: 6050 Black, 6150 White
Medium 7-11½, 12, 13, 14, (15 black only)

Women's: 7050 Black, 7150 White
Medium 5-9½, 10, 11

CORPORATE PRICE

\$39⁹⁸

RETAIL PRICE \$63.49
SAVE 37%



ENHANCE EVERY STEP WITH MEN'S AIR PISTON TECHNOLOGY

SFC Avenger

Conquer long shifts with this classic, ultra-cushioned athletic style.

Our patented SFC Mighty Grip outsole provides maximum traction, while the full outsole Air Piston Technology is designed to reduce stress on joints, absorbing heel-to-toe impact. This style includes dual-density cushioned insoles and ventilation sidewalls for breathability. Made of genuine leather.

Men's: 8043 Black, 8143 White
Medium 7-11½, 12, 13, 14, 15, 16
Wide (black only) 8½-11½, 12, 13, 14, 15, 16

CORPORATE PRICE

\$54⁹⁸

RETAIL PRICE \$83.49
SAVE 34%



AIR PISTON TECHNOLOGY



Evolution

A shock-absorbing design for ultimate, long-lasting comfort.

The Evolution features our exclusive Air Piston Technology that is designed to reduce stress on joints. Made of genuine leather, it features a padded collar, removable cushioned insoles, a stitch-reinforced toe and sleek patent leather accents. All of this combined with our patented SFC Mighty Grip outsole.

Men's: 8028 Black, 8128 White
Medium 7-11½, 12, 13, 14, 15, 16
Wide 8-11½, 12, 13, 14, 15, 16

CORPORATE PRICE

\$49⁹⁸

RETAIL PRICE \$78.49
SAVE 36%



ICONIC KICKS FOR WORK AND PLAY

WATER-RESISTANT
KEEPS FEET DRY



Old School Classic

Our vintage design delivers state-of-the-art performance. Your favorite high-top style now provides the safety and support you need for everyday wear. This water-resistant, genuine leather shoe features our patented SFC Mighty Grip outsole and cushioned insoles for long-lasting comfort and durability.

Men's: 6041 Black
Medium 4½–11½, 12, 13, 14
Wide 8–10½, 11, 12, 13



Women's: 6041 Black
Determine size using chart. Example: women's size 8 should order men's size 6½.

CORPORATE
PRICE
\$3998

RETAIL PRICE \$63.49
SAVE 37%

Old School Low-Rider

Take a fun, spirited look to work with this old school style.

Designed for long shifts, this water-resistant shoe features our patented SFC Mighty Grip outsole, cushioned insoles and a stitch-reinforced toe. Made of genuine leather.

Men's: 6040 Black
Medium 7–11½, 12, 13, 14

Women's: 4040 Black, 4140 White
Medium 4, 5–9½, 10, 11, (12 black only)
Wide (black only) 6½–9½, 10, 11



CORPORATE
PRICE
\$3998

RETAIL PRICE \$63.49
SAVE 37%



**SOFT, FLEXIBLE
LEATHER**

COMFORTABLE FIT;
ZERO BREAK-IN TIME

WOMEN'S CONVERSION SIZE CHART	
MEN'S 4½	WOMEN'S 6
5	6½
5½	7
6	7½
6½	8
7	8½
7½	9
8	9½
8½	10
9	10½
9½	11
10	11½
10½	12

OLD
SCHOOL
CLASSIC

Spirit

Get in the spirit and power through your day with this genuine leather lace-up.

Work in pure comfort with this water-resistant style that features removable cushioned insoles and added lateral support. Designed with our patented SFC Mighty Grip outsole, the Spirit has a stitch-reinforced toe and a steel shank for added support.

Women's: 7042 Black
Medium 5–9½, 10, 11

CORPORATE
PRICE
\$3998

RETAIL PRICE \$63.49
SAVE 37%



“THESE SHOES ARE
THE BEST...
THEY OFFER **INCREDIBLE
SUPPORT** AND ARE
COMFORTABLE.”

SHAYLA H.
SERVER, SUGAR LAND, TX

Dreamer

Walk on clouds in a comfortable sneaker with serious gripping power.

This trendy style combines genuine leather with sleek patent leather accents. Enhanced heel counters lend more support, and removable cushioned insoles provide unparalleled comfort. Our patented SFC Mighty Grip outsole keeps you gripping.

Women's: 9033 Black
Medium 4, 5–9½, 10, 11
Wide 6½–9½, 10, 11



CORPORATE
PRICE
\$4598

RETAIL PRICE \$66.49
SAVE 31%



GRIPPING VALUES

GRIPPING STYLES



NEW!

Zoe

Style and comfort at a price you'll appreciate. This low profile women's athletic style features our patented slip-resistant outsole.

- Patented SFC Mighty Grip outsole
- Lightweight and flexible
- Cushioned insole and mesh sock lining
- Padded collar
- Man-made upper

Women's: 7013 Black
Medium 5-9½, 10, 11



CORPORATE PRICE
\$29⁹⁸
RETAIL PRICE \$45.49
SAVE 34%

Genna

This low-profile women's athletic style, with our patented slip-resistant outsole, is an economical alternative for those on a tight budget.

- Patented SFC Mighty Grip outsole
- Lightweight and flexible
- Cushioned insole and mesh sock lining
- Padded collar • Man-made upper

Women's: 7012 Black
Medium 5-9½, 10, 11



CORPORATE PRICE
\$29⁹⁸
RETAIL PRICE \$45.49
SAVE 34%



NEW!

Freestyle

Workplace safety gets a clean, classic look.

- Patented SFC Mighty Grip outsole
- Water-resistant
- Leather and man-made upper
- Padded collar

Men's: 6010 Black
Medium 7-10½, 11, 12, 13, 14
Wide 7½-10½, 11, 12, 13

Women's: 7010 Black
Medium 5-9½, 10, 11
Wide 6½-9½, 10, 11

CORPORATE PRICE
\$26⁹⁸
RETAIL PRICE \$37.49
SAVE 28%



Zeke

This sleek, low profile men's athletic style, with our patented slip-resistant outsole, is a superb value.

- Patented SFC Mighty Grip outsole
- Lightweight and flexible
- Cushioned insole and mesh sock lining
- Padded collar
- Man-made upper

Men's: 6013 Black
Medium 7-11½, 12, 13, 14



CORPORATE PRICE
\$29⁹⁸
RETAIL PRICE \$45.49
SAVE 34%



NEW!

Panther II

Combine fashion and function with this sleek slip-on.

- Patented SFC Mighty Grip outsole
- Water-resistant
- Genuine leather
- Steel shank adds stability and arch support

Men's: 6011 Black
Medium 7-11½, 12, 13, 14
Wide 7½-10½, 11, 12, 13

CORPORATE PRICE
\$29⁹⁸
RETAIL PRICE \$45.49
SAVE 34%



Pro-Classic IV

Outstanding grip action combined with all-day comfort.

- Patented SFC Mighty Grip outsole
- Water-resistant
- Leather and man-made upper
- Removable cushioned insoles

Men's: 6005 Black
Medium 7-10½, 11, 12, 13, 14
Wide 7½-10½, 11, 12, 13

Women's: 7005 Black
Medium 4, 5-9½, 10, 11, 12
Wide 6½-9½, 10

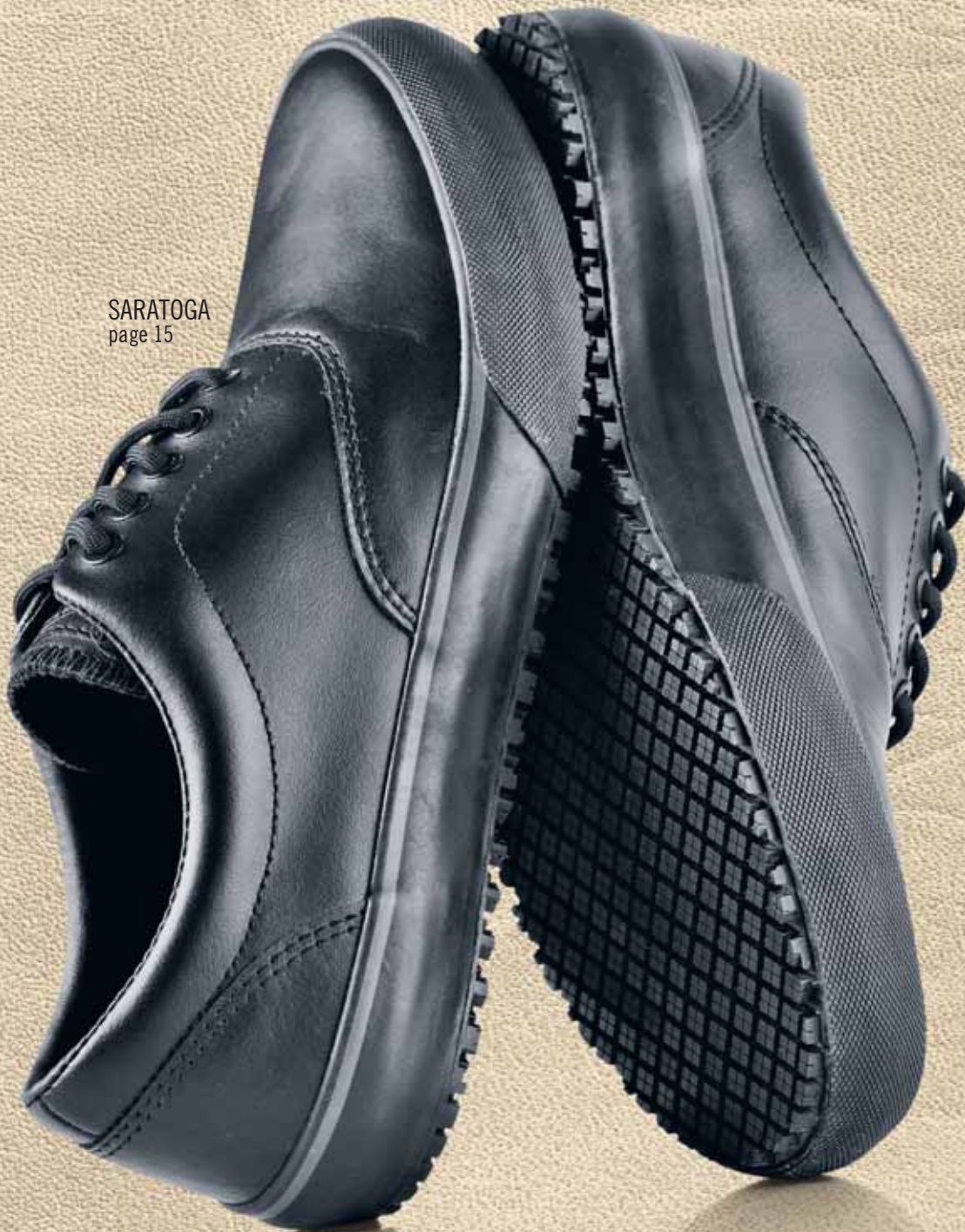
CORPORATE PRICE
\$26⁹⁸
RETAIL PRICE \$37.49
SAVE 28%



CASUAL

EVERYDAY GRIPPING STYLES

SARATOGA
page 15



“ I HAVE USED SFC FOR ALMOST
20 YEARS...
I HAVE TRIED **MANY**
STYLES AND HAVE
LIKED
THEM ALL!”

HEATHER W.
GENERAL MANAGER, JACKSON, MI



Saratoga

Achieve a relaxed look while being safe at work.

Stay safe in our water-resistant, full-grain leather lace-up. Designed with your comfort in mind, this lightweight and flexible shoe features our patented SFC Mighty Grip outsole and soft cushioned insoles.

Men's: 6045 Black
Medium 7-11½, 12, 13, 14

Women's: 4045 Black
Medium 4, 5-9½, 10, 11



CORPORATE
PRICE

\$49⁹⁸

RETAIL PRICE \$78.49

SAVE 36%



Pegasus

The latest in nonslip footwear has a scooped ankle, bungee laces and a playful attitude.

This day-to-night shoe keeps you grounded with our patented SFC Mighty Grip outsole. Crisscross bungee laces flex for comfort and a great fit, while the nubuck (like suede) accents add a touch of style. Cushioned insoles guarantee long-lasting comfort. Made of genuine leather.

Women's: 9040 Black
Medium 4, 5-9½, 10, 11



CORPORATE
PRICE

\$44⁹⁸

RETAIL PRICE \$66.49

SAVE 32%



CLASSIC CLOGS

DEDICATED TO SAFETY & COMFORT

SFC Froggz® Pro

The perfect addition to your work shoe collection.

Take safety and comfort to a new level with this durable, high-grade EVA/rubber blend clog that has a 1¼" heel. Added benefits include cushioned insoles, ventilation holes along inside of shoe and our patented SFC Mighty Grip outsole. Anti-bacterial and easy to clean.

Men's: 5008 Black, 5009 White
Medium (whole sizes only) 4-13, (14 black only)

Women's: 5008 Black, 5009 White

Determine size using chart.

Example: women's size 8 should order men's size 7.



CORPORATE PRICE
\$29⁹⁸
RETAIL PRICE \$45.49
SAVE 34%



WOMEN'S CONVERSION SIZE CHART	
MEN'S	4 : 5
	5 : 6
	6 : 7
	7 : 8
	8 : 9
	9 : 10
	10 : 11
	11 : 12
	WOMEN'S

SFC FROGGZ® PRO



ADDED HEIGHT
1¼" ENCLOSED RUBBER HEEL

Air Clog

The supreme choice for slip resistance, style and blissful comfort.

This water-resistant clog is available in full-grain or patent leather and features our patented SFC Mighty Grip outsole along with Air Piston Technology heel support. Removable, leather-lined, cushioned insoles and a steel shank ensure all-day comfort. Rubber heel measures 1¼".

Men's: 8070 Black
Medium 7-10½, 11, 12, 13

Women's: 9070 Black
9170 White, 9071 Black Patent
Medium 5-9½, 10, 11

CORPORATE PRICE
\$59⁹⁸
RETAIL PRICE \$87.49
SAVE 31%
Black patent leather

STYLISH
PATENT LEATHER



CORPORATE PRICE
\$56⁹⁸
RETAIL PRICE \$87.49
SAVE 35%
Black and white full-grain leather



AIR PISTON TECHNOLOGY

WATER-RESISTANT

DURABLE, HIGH-GRADE EVA/RUBBER BLEND

PIVOTAL STRAP

SUPPORTS HEEL AND KEEPS SHOE IN PLACE



SFC Froggz® Classic II

This versatile style is a trusted all-around favorite.

This multitasking shoe is designed with our patented SFC Mighty Grip outsole, ventilation sidewalls for breathability and a pivotal strap for heel support. Made of durable, anti-bacterial, high-grade EVA/rubber blend.

Men's: 5010 Black, 5011 White
Medium (whole sizes only) 4-13, (14, 15 black only)

Women's: 5010 Black, 5011 White

Determine size using chart.

Example: women's size 8 should order men's size 6.



CORPORATE PRICE
\$24⁹⁸
RETAIL PRICE \$37.49
SAVE 33%



WOMEN'S CONVERSION SIZE CHART	
MEN'S	4 : 6
	5 : 7
	6 : 8
	7 : 9
	8 : 10
	9 : 11
	10 : 12
	WOMEN'S

SFC FROGGZ® CLASSIC II

Iris

A unique clog style with fashion appeal.

This water-resistant, full-grain leather clog features our patented SFC Mighty Grip outsole. Its cushioned insole provides hours of comfort, while the steel shank adds stability and arch support. The European design is enhanced by decorative stitching and beading detail. Rubber heel measures 1¼".

Women's: 9072 Black, 9172 Brown
Medium 5-9½, 10, 11

CORPORATE PRICE
\$56⁹⁸
RETAIL PRICE \$87.49
SAVE 35%



STEP INTO SERIOUS COMFORT

Ollie

Our bestselling, genuine leather slip-on.

Designed with a sense of style, safety and comfort, the Ollie is water-resistant and equipped with our patented SFC Mighty Grip outsole, removable cushioned insoles and detailed contour stitching. Features elastic for a great fit.

Men's: 6044 Black
Medium 7-11½, 12, 13, 14
Wide 8-10½, 11, 12, 13, 14



Women's: 4044 Black, 4144 White
Medium 5-9½, 10, 11
Wide (black only) 6½-9½, 10, 11

CORPORATE
PRICE
\$34⁹⁸
RETAIL PRICE \$52.49
SAVE 33%



Chloe

This clean, modern slip-on makes style seem effortless.

Made of smooth full-grain leather, the Chloe features our patented SFC Mighty Grip outsole and soft cushioned insoles. Its steel shank offers added stability and arch support, while elastic sides ensure a great fit. Rubber heel measures 1½" for additional height.

Women's: 9069 Black
Medium 4, 5-9½, 10, 11

CORPORATE
PRICE
\$49⁹⁸
RETAIL PRICE \$78.49
SAVE 36%



Candy

A sweet sneaker with added height and support.

Give your feet a boost with this water-resistant shoe that's trendy but doesn't sacrifice safety. The 1¼" rubber platform and cushioned insoles provide just enough lift to get the job done. The Candy features a 360° stitch-reinforced, patented SFC Mighty Grip outsole.

Women's: 9036 Black
Medium 5-9½, 10, 11
Wide 6½-9½, 10, 11

CORPORATE
PRICE
\$44⁹⁸
RETAIL PRICE \$66.49
SAVE 32%



Predator

This sturdy, lightweight slip-on fits like a favorite sneaker.

Keep your mind off your feet in this clean, casual style made with water-resistant, full-grain leather. Our patented SFC Mighty Grip outsole gives you fierce gripping power while the removable cushioned insoles provide added comfort you deserve.

Men's: 8102 Black
Medium 7-11½, 12, 13, 14



CORPORATE
PRICE
\$49⁹⁸
RETAIL PRICE \$78.49
SAVE 36%



Discovery

This ultra-comfortable hybrid blends ruggedness with street style.

Gain incredible traction in this water-resistant, genuine leather shoe that features our patented SFC Mighty Grip outsole. A padded collar and tongue, steel shank for added support and perforated ventilation sidewalls round out this versatile shoe.

Men's: 8087 Black
Medium 7-11½, 12, 13, 14

CORPORATE
PRICE
\$49⁹⁸
RETAIL PRICE \$78.49
SAVE 36%



Wally

A slip-resistant chukka with an edge.

Rugged and durable, this genuine smooth-brushed suede chukka is water-resistant and boasts superior traction with our patented SFC Mighty Grip outsole. Removable cushioned insoles and a steel shank provide added comfort and all-day support. Features moc-stitching for a touch of style.

Men's: 8580 Black
Medium 7-10½, 11, 12, 13, 14

CORPORATE
PRICE
\$49⁹⁸
RETAIL PRICE \$78.49
SAVE 36%





POWERED BY SFC TECHNOLOGY THAT ADDS UP TO STYLE, PERFORMANCE AND COMFORT

Staying on top of today's gripping innovation is our No. 1 mission, and **topcrews™** reflects our next generation of slip-resistant technology – hip, high fashion styles with razor-edge performance, luxurious comfort and precision artistry. Footwear with an international vibe designed to impress at work or play. All **topcrews™** styles have the **SFC Mighty Grip slip-resistant outsole**, are **WATER-RESISTANT** and have a **removable cushioned insole**.

A. Sydney

URBAN-COOL CHIC

Feel amazing in a bold lace-up made of water-resistant, full-grain leather with contrast stitching and nubuck accents. This lightweight, flexible lace-up combines fresh athletic style with stand-out comfort features such as removable cushioned insoles. All powered by our SFC Mighty Grip outsole. Italian designed.

Women's: 4301 Black
Medium 4, 5-9½, 10, 11

\$59⁹⁸ CORPORATE PRICE

B. Rio

LACE UP IN STYLE

Expect a lot from your work shoe and get it in this water-resistant shoe with comfort-tech contouring. Made of full-grain leather, this sleek model features a stretch Lycra® collar and a breathable, turlex mesh lining. All powered by our patented SFC Mighty Grip outsole. Italian designed.

Women's: 4303 Black
Medium 5-9½, 10, 11

\$59⁹⁸ CORPORATE PRICE

C. Paris

HIP HIGH-PERFORMANCE WORK SHOE

Wear it and work it. Your performance, powered by our SFC Mighty Grip outsole, won't go unnoticed in this water-resistant, full-grain leather with textural accents and racer-stripe rip cord-inspired details. Pamper your feet in comfort with our removable cushioned insoles, padded collar and turlex mesh cushioned lining for ultimate comfort. Italian designed.

Women's: 4302 Black
Medium 4, 5-9½, 10, 11


\$59⁹⁸ CORPORATE PRICE

WORK IT
24/7

style
performance
COMFORT

All **topcrews™**

Italian-designed styles feature:

-  Our Patented SFC Mighty Grip Slip-Resistant Outsole
-  Removable Cushioned Insoles
-  Water-Resistant Uppers

D. Monaco

STYLISH BOAT SHOE

This boat shoe is a natural stand out at work, but its fashion details have the weekend in mind, too. Featuring superb flexibility, a breathable, turlex mesh lining and removable insoles, this full-grain leather shoe is powered by our patented SFC Mighty Grip outsole. Italian designed.

Women's: 4300 Black, 4310 Brown
Medium 5-9½, 10, 11

\$59⁹⁸ CORPORATE PRICE





it's **SAFE TO SAY, YOU**
 to please always **STICK**

MAY RISE & FALL,
 TO YOUR STORY.

men's

A. Barcelona SPORTY WITH AN EDGE

Make a power play on or off the clock in this water-resistant lace-up outfitted with our patented SFC Mighty Grip outsole. It's super comfortable thanks to the breathable, turlex mesh lining and removable cushioned insoles. Nubuck accents and contrast stitching take it up a notch. Italian designed.

Men's: 4203 Black
 Medium 7-11½, 12, 13, 14

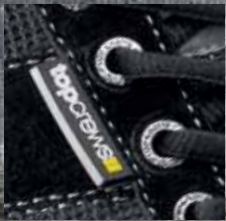
\$64⁹⁸ CORPORATE PRICE

B. Panama HIP SNEAKER-STYLE SHOE

Sporty contrast stitching accentuates micro-embossed, full-grain leather sides in a lightweight, water-resistant shoe. Jam-packed with comfort and safety features, this versatile style features our removable cushioned insole and patented SFC Mighty Grip outsole. Italian designed.

Men's: 4202 Black
 Medium 7-11½, 12, 13, 14, 15

\$59⁹⁸ CORPORATE PRICE



A. Barcelona

B. Panama



C. Rome

D. Madrid

C. Rome CITY STREET COOL SLIP-ON

It's the essence of effortless, city street fashion – that's how this nappa leather, water-resistant slip-on got its noble name. Elastic features for great fit, a breathable, turlex mesh lining and removable cushioned insoles provide luxurious comfort. All powered by our patented SFC Mighty Grip outsole. Italian designed.

Men's: 4204 Black
 Medium 7-11½, 12, 13, 14, 15, 16
 Wide 8-11½, 12, 13, 14, 15, 16

\$62⁹⁸ CORPORATE PRICE

D. Madrid CASUAL SHOE WITH A EUROPEAN VIBE

Inspired by a European flavor, this lightweight, water-resistant lace-up is packed with incredible comfort and high-performance function. Crafted from supple nappa leather, this flexible shoe has removable cushioned insoles and a padded interior. All powered by our SFC Mighty Grip outsole. Italian designed.

Men's: 4201 Black
 Medium 7-11½, 12, 13, 14, 15, 16
 Wide 8-11½, 12, 13, 14, 15, 16

\$62⁹⁸ CORPORATE PRICE

work
play



E. Newport BOAT SHOE WITH A MAJOR UPGRADE

This boat shoe's classic styling and smart details combine comfort with durability. The water-resistant upper has a breathable, turlex mesh lining, and our removable cushioned insole and patented SFC Mighty Grip outsole provide dusk-'til-dawn wearability. An embossed logo defines topcrews™ quality. Italian designed.

Men's: 4200 Black, 4210 Brown
 Medium 7-11½, 12, 13, 14

\$62⁹⁸ CORPORATE PRICE



E. Newport

MIGHTYMAT®

MAXIMUM SAFETY

15 mm
10 mm
5 mm
0 mm
Mat Thickness:
6.5 millimeters

MIGHTYMAT CLASSIC

MightyMat® Classic

The original mat. For high-traction and low-profile areas.

- Patented slip-resistant rubber base and grid pattern
- All-grit upper with serrated edge for added durability
- Anti-bacterial treatment prevents growth of mildew, fungus, algae, yeast, mold, E coli and salmonella
- Fits under doorways
- Measures 3' x 5' – thickness 6.5 mm

STYLE 20
CORPORATE
PRICE
\$89⁹⁸
RETAIL PRICE \$117.98
SAVE 24%

15 mm
10 mm
5 mm
0 mm
Mat Thickness:
14.8 millimeters

MIGHTYMAT INTERLOCKING

MightyMat® Interlocking

Customize to fit any space, large or small.

- Easy to assemble and disassemble; easy to clean, carry and transport
- Interlocking system quickly locks mats together for a secure, seamless fit
- All-grit surface for high-traction and slip resistance
- Thick rubber construction helps relieve fatigue
- Drainage slots direct liquids away from the surface
- Sections measure 3' x 3' – thickness 14.8 mm
- Anti-bacterial properties

STYLE 45
END SECTION
with finishing end piece
CORPORATE
PRICE
\$66⁹⁸
RETAIL PRICE \$79.78
SAVE 16%

STYLE 46
MID SECTION
CORPORATE
PRICE
\$63⁹⁸
RETAIL PRICE \$76.36
SAVE 16%

15 mm
10 mm
5 mm
0 mm
Mat Thickness:
14.8 millimeters

MIGHTYMAT MAX II

MightyMat® Max II

The ultimate in anti-fatigue and slip resistance.

- Patented slip-resistant rubber base and grid pattern
- Anti-bacterial treatment prevents growth of mildew, fungus, algae, yeast, mold, E coli and salmonella
- Rubberized diamond plate pattern and serrated edge for added durability
- Measures 3' x 4' – thickness 14.8 mm
- Anti-fatigue cushion provides all-day comfort

STYLE 40
CORPORATE
PRICE
\$99⁹⁸
RETAIL PRICE \$126.48
SAVE 21%

One-Year Guarantee

If not 100% satisfied, we'll refund (or replace your Mat) within ONE FULL YEAR of purchase.*
*This guarantee applies to manufacturer defects. Refund excludes shipping, and a return authorization is required.

SHIPPING & HANDLING FOR ALL MATS: **\$9.98 EACH MAT**

All mats ship via ground within the contiguous United States. All other areas, call for additional rates.



AS LOW AS
\$11⁹⁸

crew Guard
SLIP-RESISTANT OVERSHOES

Stock up and **SAVE!**
Prices include shipping & handling.

Make any shoe slip resistant and waterproof.

Prepare for unexpected messes and situations with our slip-on overshoes. They protect your shoes with our patented SFC Mighty Grip outsole. Great for new hires, visitors or any employee not already wearing our top-rated footwear.

SIZES	XXS	XS	S	S+	M	M+	L	XL	XXL
MEN'S EQ.	–	3-5	5-6	6 ^{1/2} -8	8-9	9 ^{1/2} -10 ^{1/2}	10 ^{1/2} -12 ^{1/2}	13-15	15 ^{1/2} -17
WOMEN'S EQ.	3-4 ^{1/2}	5-7	7-8	8 ^{1/2} -10	10-11	11 ^{1/2} -12 ^{1/2}	–	–	–

# OF PAIRS	1-2 PAIRS	3-6 PAIRS	7-11 PAIRS	12-24 PAIRS	25+ PAIRS
CORP. PRICE	\$18.98 PER PAIR	\$17.98 PER PAIR	\$15.98 PER PAIR	\$13.98 PER PAIR	\$11.98 PER PAIR

UNISEX: 50 Black

Before ordering, please determine your CrewGuard® size by using the conversion chart on the right.

Arch Insoles

\$19⁹⁸ BEST FOR DRESS, WORK, ATHLETIC AND CASUAL SHOES
Men's: 1128 Red Medium 7–8½, 9–10½, 11–12½
Women's: 1129 Pink Medium 5–7½, 8–11

- ENHANCES ARCH SUPPORT
- KEEPS FEET COOL AND COMFORTABLE
- PROTECTS AGAINST BACTERIA AND ODORS

MAX CUSHIONING

HIGH ARCH TYPES



Gel Heel Pad Insoles

Made with Sof Gel®, a revolutionary lightweight polymer gel for superior support. Includes one pair.
Style: 1119

\$6⁹⁸



Airr Orthotic Insoles

\$29⁹⁸ BEST FOR WORK, ATHLETIC AND CASUAL SHOES
Men's: 1124 Red Medium 7–8½, 9–10½, 11–12½, 13–14
Women's: 1125 Green Medium 5–7½, 8–11

- EASES THE STRESS ON JOINTS
- INCREASES BREATHABILITY AND COMFORT
- MAINTAINS FOOT ALIGNMENT
- PROVIDES SHOCK ABSORPTION

MAX CUSHIONING

for ALL ARCH TYPES



PREMIUM INSOLES

Insoles may not be compatible with all shoe styles.

Massaging Gel Insoles

\$14⁹⁸ BEST FOR LOW-PROFILE STYLES (SUCH AS OLD SCHOOL LOW-RIDER)
Men's: 1122 Medium 8–12
Women's: 1123 Medium 5–10

- OFFERS CUSTOMIZED FULL-FOOT COMFORT
- REDUCES FOOT PAIN FROM STANDING LONG HOURS
- PROVIDES EXTRA SUPPORT



LOW PROFILE

FULL-FOOT COMFORT

EnduraMax Insoles

\$9⁹⁸ BEST FOR CASUAL AND DRESS SHOES
Men's: 1115 Medium 7–11½, 12, 13, 14, 15
Women's: 1116 Medium 5–9½, 10, 11

- REINFORCED HEEL CUP
- ARCH SUPPORT



FULL SUPPORT

ComfortMax II Insoles

\$9⁹⁸ BEST FOR CASUAL AND DRESS SHOES
Men's: 1113 Medium 7–11½, 12, 13, 14, 15
Women's: 1114 Medium 5–9½, 10, 11

- AERATED DESIGN ALLOWS AIR TO CIRCULATE



MAX CUSHIONING

BEST FOR ATHLETIC SHOES AND WORK BOOTS

Men's: 1111 Medium 7–11½, 12, 13, 14, 15
Women's: 1112 Medium 5–9½, 10, 11

Super Socks

A blend of cotton-nylon-Lycra® spandex that absorbs perspiration and allows feet to breathe. Three pairs per package.

\$8⁹⁸
LOW CUT



Low Cut
Women's: 1145 Black, 1144 White One size fits 6–11

\$9⁹⁸
MIDCALF



Midcalf
Men's: 1141 Black, 1140 White One size fits 7–13
Women's: 1143 Black, 1142 White One size fits 6–11

25 YEARS & STILL GRIPPING

SHOES FOR CREWS® REVOLUTIONIZED WORKPLACE SAFETY with the introduction of the PATENTED SFC MIGHTY GRIP OUTSOLE. As the global leader in slip-resistant footwear, you can **COUNT ON US TO PROVIDE THE BEST...**

STYLE

OVER 100 UNIQUE STYLES IN-STOCK & READY TO SHIP: ATHLETIC, DRESS, WORK & CASUAL. THE PERFECT FIT FOR EVERY BUDGET.

COMFORT

DESIGNED TO CRADLE YOUR FEET IN UNBELIEVABLE COMFORT. SOFT PREMIUM LEATHERS, FEATHERLIGHT TECHNOLOGY, CUSHIONED INSOLES, PADDED COLLARS & MORE.

DURABILITY

ONLY THE TOUGHEST LEATHERS & MOST DURABLE COMPOSITES. WATER-RESISTANT BALLISTIC KNITS & REINFORCED HEELS. DESIGNED TO STAND THE TEST OF TIME.

GRIP

SINCE 1984, OUR UNIQUE COMPOUND HAS PROVIDED MORE SLIP RESISTANCE THAN ANY SHOE ON THE MARKET.

ELEMENTS IN EACH SHOE MAY VARY

SFC OUT-GRIPS THE COMPETITION

Independent Slip-Resistant Testing by Precision Testing Laboratories
On a scale where 0.0 is the absence of friction and 1.0 is very high friction (e.g., dry carpet), SFC rated .59 – more than doubling the .29 average of the competitors above. See full April 2012 Independent Lab Test results at shoesforcrews.com/technology.



ELECTRICAL HAZARD (EH RATED)
Footwear meets ASTM standards by providing Electrical Shock Resistance protection for the entire work boot. The insulating properties are measured under dry conditions and may deteriorate with wear and in wet environments.



FEATHERLIGHT TECHNOLOGY
Styles that feature the Featherlight Technology icon are built with a lightweight flexible midsole or with a lightweight, durable, high-grade EVA/rubber blend that makes our shoes seem light as air. Look for the purple Featherlight icon for our lightest styles.



ELECTROSTATIC DISSIPATING (ESD RATED)
Footwear meets ASTM standards. The upper helps conduct electrical charges from your body to the ground; the footbed, insole and outsole dissipate static electricity.

Order Online or By Phone!

Take advantage of our **FAST** and **EASY** online ordering system.

Account No. _____ **Key code from back cover** _____

Company Information

Date _____ Company Name _____
 Unit _____ Unit Manager _____
 Shipping Address _____
 Work Phone _____ Fax _____
 Email Address _____
 (Required for shipment confirmation)

SHOES FOR CREWS® Voluntary Shoe Purchase Agreement
I do hereby authorize the company to deduct the balance owed on my shoe purchase following the Payroll Department's receipt of the SHOES FOR CREWS invoice. If I terminate my position prior to the SHOES FOR CREWS purchase being paid in full, I authorize the company to deduct the unpaid balance from my final paycheck. I am aware that my employer reserves the right to recover unpaid balances through the cooperation of applicable state agencies. I am aware that it is my responsibility to return shoes to the SHOES FOR CREWS warehouse if a shoe size change or refund is desired. THIS IS A VOLUNTARY PROGRAM AND IS NOT A CONDITION OF EMPLOYMENT WITHIN THE COMPANY and is void where prohibited.



60-DAY WEAR & COMPARE GUARANTEE

FREE Exchanges & E-Z Returns
100% satisfaction guaranteed. If you're not happy with your shoes for any reason, simply return them within 60 days of purchase using the FREE pre-paid UPS shipping label. We will gladly exchange your shoes free of charge, or refund your shoe purchase price less a \$6.95 per pair processing fee.

*This applies only to orders within the contiguous United States.

Our customer service professionals are available to assist you 24 hours a day, 7 days a week.



CALL
1.800.523.4448
Live customer support



SHOP MOBILE
Mobile app for iPhones® & Android



Order Details Employee 1				Order Details Employee 2					
Employee Name	Shoe Price	Sales Tax** ADD APPLICABLE SALES TAX FOR CA, FL, NV, SC AND TX	Shipping SEE SHIPPING CHART	Total	Employee Name	Shoe Price	Sales Tax** ADD APPLICABLE SALES TAX FOR CA, FL, NV, SC AND TX	Shipping SEE SHIPPING CHART	Total
_____	_____	_____	_____	_____	_____	_____	_____	_____	_____
Employee ID or Social Security _____	Style _____ Size _____ Width _____	Signature _____	_____	_____	Employee ID or Social Security _____	Style _____ Size _____ Width _____	Signature _____	_____	_____
Email Address (Required for shipment confirmation) _____	_____	_____	_____	_____	Email Address (Required for shipment confirmation) _____	_____	_____	_____	_____

Method of Payment (Check One)

Payroll Deduction
The shoe cost, applicable taxes, plus shipping and handling will be deducted from your paycheck(s). See your Manager or Payroll Administrator for details.

Billable Account
Your company may allow alternative payment methods. Please call Customer Service for details 1.800.523.4448.

Shoes For Crews Privacy Policy
Your privacy is very important to us. Shoes For Crews will not disclose customer information to any third parties or other government agencies, unless required to do so by State or Federal law. Please contact us if you wish to be removed from our mailing list.

Shoes For Crews Shipping Rates

Quantity	Standard Delivery 3-5 business days	Express Delivery 2-3 business days	Next Business Day Phone order, online by 2 p.m. EST only
1-2 pairs	\$6.98 per pair	\$9.98 per pair	\$16.98 per pair
3-5 pairs	\$5.98 per pair	\$8.98 per pair	\$12.98 per pair
6+ pairs	\$4.98 per pair	\$7.98 per pair	\$10.98 per pair

Alaska and Hawaii, add \$6.00 per shipment. Puerto Rico, Virgin Islands and all other territories call 1.800.523.4448 for shipping rates.
**Some corporate entities may be tax exempt.

Not responsible for any typographical errors. Prices subject to change.

Shoes For Crews® • 250 South Australian Ave., West Palm Beach, FL 33401 • Phone 1.800.523.4448 • Fax 1.888.647.4637

DRESS

FIRST-CLASS FOOTWEAR

ARISTOCRAT II
page 29



“**GREAT SHOES**
FOR RESTAURANT MANAGERS...
I'M ON MY FEET FOR
10-12 HOURS
STRAIGHT, AND I AM STILL
VERY
COMFORTABLE.”

NATE R.
MANAGER, CHICAGO, IL



Aristocrat II

This polished oxford promotes your look and elevates your level of comfort.

Move through your workday with confidence. Smooth, full-grain leather sets an executive tone while the patented SFC Mighty Grip outsole keeps you safe. The Aristocrat II is designed with a steel shank for added support and features removable cushioned insoles.

Men's: 1010 Black, 1110 Brown
Medium 7-10½, 11, (11½ black only), 12, 13, (14 black only)
Wide (black only) 8-10½, 11, 12, 13, 14

CORPORATE
PRICE
\$59⁹⁸

RETAIL PRICE \$90.49
SAVE 34%



Cooper

A modern chelsea boot with business class.

You'll be ready for any state of affairs in this wearable, striking design that's fit for every occasion. This water-resistant, full-grain leather boot offers reliable gripping action with our patented SFC Mighty Grip outsole. Let the Cooper effortlessly transition you from the office to evening. Features include leather-lined, cushioned insoles, elastic sides for a secure fit and a pull strap for support.

Men's: 1206 Black
Medium 7-11½, 12, 13, 14

CORPORATE
PRICE
\$79⁹⁸

RETAIL PRICE \$112.49
SAVE 29%



SHOES FOR CREWS
Black Label™



See women's dress styles page 30

STYLE, GRACE & GRIP FOR WOMEN

Ballerina II

This graceful style is updated with luxurious full-grain leather.

In addition to being water-resistant, full-grain leather, the Ballerina II has our patented SFC Mighty Grip outsole. This lightweight and flexible style features cushioned insoles and a steel shank for added support. Rubber heel measures 1/2".

Women's: 3610 Black
Medium 5-9 1/2, 10, 11



CORPORATE PRICE

\$39⁹⁸

RETAIL PRICE \$63.49
SAVE 37%



Hannah

Complete your look with a wedge that offers modest sophistication and blissful comfort.

Bring out your business casual look in this square wedge that boasts our patented SFC Mighty Grip outsole. The perfect mix of streamlined simplicity and comfort, this lightweight and flexible shoe features smooth, full-grain leather and removable cushioned insoles. Rubber heel measures 1 3/4".

Women's: 3615 Black
Medium 5-9 1/2, 10, 11

CORPORATE PRICE

\$49⁹⁸

RETAIL PRICE \$78.49
SAVE 36%



Envy II

A traditional look that offers powerful slip resistance.

Envy II features our patented SFC Mighty Grip outsole, cushioned insoles and a steel shank for added support. Elastic gives this water-resistant, full-grain leather shoe a secure fit. Rubber heel measures 1 1/4".

Women's: 3614 Black, 3114 Brown

Medium 5-9 1/2, 10, 11
Wide (black only) 6 1/2-9 1/2, 10, 11

CORPORATE PRICE

\$49⁹⁸

RETAIL PRICE \$78.49
SAVE 36%



Isabella

Safety, style and sophistication – all you need in one shoe.

This classic leather women's dress shoe is lightweight, flexible and features our patented SFC Mighty Grip outsole. Contour stitching and a 1 1/2" heel make this shoe stylish enough for work and play. Made of leather and man-made upper.

Women's: 3611 Black
Medium 5-9 1/2, 10, 11



CORPORATE PRICE

\$34⁹⁸

RETAIL PRICE \$53.49
SAVE 35%



Duchess

Rise to the top in this stylish lace-up boot.

Thanks to our patented SFC Mighty Grip outsole, this water-resistant ankle boot provides dependable traction on the slickest surfaces. Soft, full-grain leather, a steel shank, dual-density cushioned insoles and a 1 1/2" polymer and rubber heel combine to give you comfort and security.

Women's: 3612 Black
Medium 5-9 1/2, 10, 11

CORPORATE PRICE

\$61⁹⁸

RETAIL PRICE \$90.49
SAVE 32%



Jane II

A shoe with savvy style that won't slow you down.

This durable style with accent stitching is water-resistant and features our unmatched slip-resistant lug outsole. Removable cushioned insoles provide comfort, and a steel shank adds arch support. Made of genuine leather with our patented SFC Mighty Grip outsole. Rubber heel measures 3/4".

Women's: 3582 Black
Medium 4, 5-9 1/2, 10, 11
Wide 6 1/2-9 1/2, 10, 11

CORPORATE PRICE

\$52⁹⁸

RETAIL PRICE \$79.49
SAVE 33%



Madison

Pull off a polished look with this classic oxford design.

Our patented SFC Mighty Grip outsole makes this shoe safe and reliable. The Madison is water-resistant and made of genuine leather. Features include a steel shank for arch support, removable cushioned insoles and a padded collar. Rubber heel measures 3/4".

Women's: 7006 Black
Medium 5-9 1/2, 10, 11

CORPORATE PRICE

\$34⁹⁸

RETAIL PRICE \$53.49
SAVE 35%





**DISTINGUISHED
LOOKS THAT
DELIVER
SAFETY**



Morgan

A reliable and lustrous shoe packaged with total comfort.

Focus on your work; we'll take care of your feet. This modern and classy slip-on style has our patented SFC Mighty Grip outsole. The Morgan is made with full-grain leather and features removable cushioned insoles, a steel shank for added support and elastic for a great fit.

Men's: 1021 Black
Medium 7-11½, 12, 13, 14

CORPORATE
PRICE
\$59⁹⁸
RETAIL PRICE \$90.49
SAVE 34%

Metro II

Rugged, street-smart attitude never compromises comfort and safety.

Ideal for a heavy-duty work environment, this water-resistant, genuine leather lace-up features our patented SFC Mighty Grip outsole. The lug outsole design, removable cushioned insoles and a steel shank add to the shoe's comfort level and support. Features accent stitching.

Men's: 8582 Black
Medium 7-11½, 12, 13, 14, 15, 16
Wide 8-11½, 12, 13, 14, 15, 16

CORPORATE
PRICE
\$52⁹⁸
RETAIL PRICE \$79.49
SAVE 33%

Cambridge

Durable, dependable and radiates professional.

Our classic oxford delivers ultimate comfort and safety. The Cambridge features water-resistant, genuine leather, plus our 360° stitch-reinforced, patented SFC Mighty Grip outsole. Removable cushioned insoles and a steel shank add comfort and arch support.

Men's: 6006 Black
Medium 7-11½, 12, 13, 14, 15
Wide 8-10½, 11, 12, 13, 14

CORPORATE
PRICE
\$34⁹⁸
RETAIL PRICE \$53.49
SAVE 35%



BLACK LABEL™ for Men

Diplomat

Our classic wingtip oxford delivers executive style and incomparable safety.

Start the day with impeccable style in this wingtip oxford that features a leather-lined interior. The Diplomat is water-resistant, has a steel shank for added stability and boasts our patented SFC Mighty Grip outsole for maximum traction. Made of full-grain leather.

Men's: 1205 Black
Medium 7-11½, 12, 13, 14

CORPORATE
PRICE
\$69⁹⁸
RETAIL PRICE \$98.49
SAVE 29%



Senator

Maintain a distinctive image without sacrificing safety.

The Senator is our classic capped-toe oxford that features removable, leather-lined, cushioned insoles, a padded collar and a steel shank for added support. Our patented SFC Mighty Grip outsole provides maximum traction and durability. Handcrafted from the finest Italian leather.

Men's: 1201 Black, 1211 Brown
Medium 7-11½, 12, 13, (14 black only)
Wide (black only) 8-11½, 12, 13, 14

CORPORATE
PRICE
\$69⁹⁸
RETAIL PRICE \$98.49
SAVE 29%



Statesman

A sophisticated slip-on designed for incredible comfort and traction.

Clean seam detailing is paired with our patented SFC Mighty Grip outsole in this traditional capped-toe style. A leather-lined interior, a padded collar and a steel shank add support and all-day comfort. Crafted from the finest Italian leather.

Men's: 1202 Black, 1212 Brown
Medium 7-11½, 12, 13, (14 black only)
Wide (black only) 8-11½, 12, 13, 14

CORPORATE
PRICE
\$69⁹⁸
RETAIL PRICE \$98.49
SAVE 29%



SHOES FOR CREWS *Black Label*™

THIS PREMIUM FOOTWEAR COLLECTION COMBINES LUXURIOUS CRAFTSMANSHIP WITH THE WORLD'S #1 RATED SLIP-RESISTANT OUTSOLE. IT'S THE PERFECT BALANCE OF COMFORT, SAFETY AND IMPECCABLE STYLE.

BLACK LABEL™ for Women

STYLE MEETS SOPHISTICATION

Carmen

The perfect balance of charm and function.

Strap into shoes you will not want to take off. This double strap dress shoe features our patented SFC Mighty Grip outsole and removable cushioned insoles. The lightweight and flexible design beautifully reflects the sheen of patent leather. Rubber heel measures 1¾" for additional height.

Women's: 3705 Black
Medium 4, 5-9½, 10, 11



“NO
SLIPPING,
WATER
RESISTANT
AND CUTE
ON TOP OF IT ALL...”

ALEXIS G.
CREW MEMBER, METAMORA, MI

CORPORATE
PRICE
\$56⁹⁸
RETAIL PRICE \$87.49
SAVE 35%

Kate

Take a classic look to work with a shoe that's sweet and chic.

The Kate is one style you can count on for unlimited compliments and protection against slips and falls. Designed with our patented SFC Mighty Grip outsole, this water-resistant style offers premium full-grain leather and cushioned insoles. Lightweight and flexible, the shoe has a rubber heel that measures 2¾" for additional height.

Women's: 3707 Black
Medium 5-9½, 10, 11

CORPORATE
PRICE
\$56⁹⁸
RETAIL PRICE \$87.49
SAVE 35%



Jackie

A style you can wear all year long in first-class comfort.

A traditional style comes to life with this modern new look. Available in brown or black premium full-grain leather, the Jackie features our patented SFC Mighty Grip outsole and cushioned insoles. The lightweight and flexible shoe has an attractive vamp with a rubber heel that measures 2¾" for additional height.

Women's: 3706 Black, 3716 Brown
Medium 5-9½, 10, 11



CORPORATE
PRICE
\$56⁹⁸
RETAIL PRICE \$87.49
SAVE 35%

Sienna

Stay classy and comfortable on the job in a securely fitted shoe.

Start your day in total comfort with a shoe that's all about you. Timeless styling and premium full-grain leather make this design the perfect addition to your work shoe collection. The Sienna features our patented SFC Mighty Grip outsole and removable cushioned insoles to keep you comfortable. Rubber heel measures 1¾" for additional height.

Women's: 3704 Black
Medium 4, 5-9½, 10, 11

CORPORATE
PRICE
\$56⁹⁸
RETAIL PRICE \$87.49
SAVE 35%



WORK

BUILT TO PERFORM



VOYAGER
page 37

“SHOES FOR CREWS
HELPED KEEP
OUR GUYS
SAFE WHILE BUILDING
CHAMPIONSHIP RACE CARS.”

BRAD KESELOWSKI
PENSKE RACING, SPRINT CUP SERIES CHAMPION

THE OFFICIAL WORK SHOE OF



For more on our partnership with Penske Racing, check out shoesforcrews.com/racing.
Used under license from Penske Racing South, Inc.



WOMEN'S CONVERSION SIZE CHART	
4 1/2	6
5	6 1/2
5 1/2	7
6	7 1/2
6 1/2	8
7	8 1/2
7 1/2	9
8	9 1/2
8 1/2	10
9	10 1/2
9 1/2	11
10	11 1/2
10 1/2	12

Voyager – Steel Toe

Tackle slippery terrain with this sporty, breathable boot.

Slippery messes won't slow you down in these 360° stitch-reinforced, water-resistant, genuine leather boots with our patent pending SFC V-Grip™ outsole. The steel toe meets ASTM standards.* Features removable cushioned insoles and a reinforced rubber toe and heel cover.

Men's: 8090 Black

Medium 4 1/2–10 1/2, 11, 12, 13, 14
Wide 7 1/2–10 1/2, 11, 12, 13, 14

Women's: 8090 Black

Determine size using chart.
Example: women's size 8 should order men's size 6 1/2.

CORPORATE
PRICE

\$52⁹⁸

RETAIL PRICE \$79.49
SAVE 33%



Yukon III – Steel Toe **UPDATED STYLE!**

Head out in a resilient safety boot you can always depend on.

This water-resistant, full-grain leather boot features a reinforced toe wrap and a steel toe that meets ASTM standards.* Our patent pending SFC V-Grip™ outsole enables you to tackle slick surfaces with ease, while the steel shank, padded collar and removable cushioned insoles provide superior support and comfort. ESD Rated**.

Men's: 8290 Black

Medium 7–11 1/2, 12, 13, 14, 15
Wide 8–11 1/2, 12, 13, 14, 15



CORPORATE
PRICE

\$84⁹⁸

RETAIL PRICE \$117.49
SAVE 28%

NEW!

updated style
coming in May!



*The steel toe and composite toe meet ASTM F-2413-11 standards bearing a class 75 rating.
** Electrostatic Dissipating (ESD Rated) footwear meets ASTM standards. The upper helps conduct electrical charges from your body to the ground; the footbed, insole and outsole dissipate static electricity.

STAND STRONG IN SAFETY TOE WORK BOOTS

WATER-RESISTANT
FULL-GRAIN LEATHER



Expedition – Steel Toe

A rugged style that stands up to the harshest conditions.

Start every shift on the right foot with our patent pending SFC V-Grip™ outsole. Built tough with a steel toe that meets ASTM standards,* the Expedition is water-resistant and features removable cushioned insoles, and a steel shank for strong support. Made of full-grain leather.

Men's: 8088 Black
Medium 7-10½, 11, 12, 13, 14, 15
Wide 8-10½, 11, 12, 13, 14, 15

CORPORATE
PRICE
\$74⁹⁸

RETAIL PRICE \$105.49
SAVE 29%

Senator – Steel Toe

Make a managerial impression while staying safe at any construction site.

Our traditional capped-toe oxford design now features a steel toe that meets ASTM standards.* Prepared to get you through challenging days, the Senator features clean detailing paired with water-resistant, full-grain leather. Its patented SFC Mighty Grip outsole provides maximum traction when you need it the most, while a padded collar and removable cushioned insoles give you first-rate comfort.

Men's: 8201 Black
Medium 7-11½, 12, 13, 14

CORPORATE
PRICE
\$75⁹⁸

RETAIL PRICE \$98.49
SAVE 23%



SHOES FOR CREWS
Black Label™



38 TOP-RATED, SLIP-RESISTANT OUTSOLE!

Amber – Women's Steel Toe

This stylish loafer is designed for ultimate safety.

This water-resistant, full-grain leather shoe features removable cushioned insoles for all-day comfort plus our patented SFC-5 outsole and a steel toe that meets ASTM standards.* Rubber heel measures ¾".

Women's: 3901 Black
Medium 5-9½, 10, 11

CORPORATE
PRICE
\$49⁹⁸

RETAIL PRICE \$78.49
SAVE 36%



STEEL TOE

STEEL TOE MEETS
ASTM F-2413-11
STANDARDS BEARING
A CLASS 75 RATING

SLIP RESISTANT

SFC V-GRIP™ OUTSOLE ENGINEERED TO KEEP
YOU ON YOUR FEET IN EXTREME CONDITIONS

Molly – Women's Steel Toe

Our new women's safety-toe, lace-up boot has rugged lived-in appeal.

These EH rated** work boots command the perfect amount of attention while supporting your direction. Built with durable genuine leather, the Molly features our patented SFC-5 outsole and a steel toe that meets ASTM standards.* Lace up and step out in a water-resistant, lightweight boot designed with removable cushioned insoles and a padded interior.

Women's: 8287 Black
Medium 5-9½, 10, 11

CORPORATE
PRICE
\$69⁹⁸

RETAIL PRICE \$96.49
SAVE 27%



* The steel toe and composite toe meet ASTM F-2413-11 standards bearing a class 75 rating.

** Electrical Hazard Protection (EH Rated) footwear meets ASTM standards by providing Electrical Shock Resistance protection for the entire work boot. The insulating properties are measured under dry conditions and may deteriorate with wear and in wet environments.

SOLID STYLES FOR WOMEN

Xtreme Sport Hiker – Soft Toe

Let this sturdy boot get you through your demanding workday.

Get the rugged reliability of a hiking boot with the added protection of our patented SFC Mighty Grip outsole. Features include padded ankle protection, a protective bumper toe and removable cushioned insoles. A reinforced rhino wrap and a steel shank provide durability and support.

Men's: 8084 Black, 8085 Brown
Medium 4½–10½, 11, 12, 13, 14, 15

Women's: 8084 Black, 8085 Brown
Determine size using chart. Example:
women's size 8 should order men's size 6½.



WOMEN'S CONVERSION SIZE CHART	
4½	6
5	6½
5½	7
6	7½
6½	8
7	8½
7½	9
8	9½
8½	10
9	10½
9½	11
10	11½
10½	12

CORPORATE PRICE

\$52⁹⁸

RETAIL PRICE \$79.49

SAVE 33%

Black full-grain leather

CORPORATE PRICE

\$56⁹⁸

RETAIL PRICE \$90.49

SAVE 37%

Brown distressed oiled leather



Hornet – Steel Toe

This durable hiker is all about safety, style and comfort.

Work safely in this water-resistant, genuine leather boot that features our patent pending SFC V-Grip™ outsole and a steel toe that meets ASTM standards.* Removable cushioned insoles with a reinforced rubber toe and heel cover.

Men's: 8100 Black
Medium 7–10½, 11, 12, 13, 14
Wide 8–10½, 11, 12, 13

CORPORATE PRICE

\$49⁹⁸

RETAIL PRICE \$78.49

SAVE 36%



Rigger – Composite Toe

This water-resistant boot tackles the most slippery conditions.

The EH Rated** Rigger features built-in superior safety such as our patent pending SFC V-Grip™ outsole, a reinforced heel, a padded ankle and a puncture-resistant footbed. The polycarbonate composite toe meets ASTM standards.* Features full-grain leather, removable cushioned insoles and a steel shank for added support.

Men's: 5053 Black
Medium 7–10½, 11, 12, 13, 14, 15

CORPORATE PRICE

\$89⁹⁸

RETAIL PRICE \$125.49

SAVE 28%



WORK BOOTS THAT ASSURE COMFORT

Legionnaire – Soft Toe

This military-style boot takes safety seriously.

Stand strong in these water-resistant, genuine leather boots paired with our patent pending SFC V-Grip™ outsole. The Legionnaire features removable cushioned insoles and a steel shank for added support.

Men's: 8081 Black
Medium 7–10½, 11, 12, 13, 14
Wide 8–10½, 11, 12, 13

CORPORATE PRICE

\$49⁹⁸

RETAIL PRICE \$78.49

SAVE 36%



Trekker – Soft Toe

Trek into work with this mid-height hiker that delivers dependable protection.

Get a grip on slippery surfaces with our patented SFC Mighty Grip outsole. This full-grain leather, water-resistant boot features removable cushioned insoles. A steel shank adds arch support and stability.

Men's: 8098 Black
Medium 7–10½, 11, 12, 13, 14, 15



CORPORATE PRICE

\$61⁹⁸

RETAIL PRICE \$90.49

SAVE 32%



Trends Hiker III – Soft Toe

Take the durability, support and comfort of a hiking boot to work.

Maneuver safely through watery, oily or greasy spills in water-resistant, full-grain leather boots featuring our 360° stitch-reinforced patent pending SFC V-Grip™ outsole. Removable cushioned insoles and a padded tongue, collar and ankle provide comfort, and the steel shank offers additional support.

Men's: 8080 Black
Medium 7–10½, 11, 12, 13, 14
Wide 8–10½, 11, 12, 13, 14

CORPORATE PRICE

\$61⁹⁸

RETAIL PRICE \$90.49

SAVE 32%



*The steel toe and composite toe meet ASTM F-2413-11 standards bearing a class 75 rating.

**Electrical Hazard Protection (EH Rated) footwear meets ASTM standards by providing Electrical Shock Resistance protection for the entire work boot. The insulating properties are measured under dry conditions and may deteriorate with wear and in wet environments.



COMPOSITE TOE WORK BOOTS

Mammoth – Composite Toe

Fully waterproof and lined with 200g Thinsulate™ insulation, this boot will keep you warm and dry. The comfortable inner lining is made of turlax, poly nylon and cotton. The full-grain leather upper offers comfort and durability, while our patent pending SFC V-Grip™ outsole will keep you on your feet. If you work in cold, wet, slippery environments, the Mammoth is your boot!

Men's: 8289 Brown & Black
Medium 4½–11½, 12, 13, 14, 15, 16



CORPORATE PRICE
\$899⁹⁸
RETAIL PRICE \$125.49
SAVE 28%

NEW!



Maverick – Composite Toe

Take control of any job in these durable work boots.

This EH Rated™ work boot features our patent pending SFC V-Grip™ outsole and meets approved ASTM standards.* The waterproof Maverick has a padded collar and tongue, removable, leather-lined, cushioned insoles and a steel shank for added support. Its inner lining helps keep feet dry and a reinforced heel promotes durability.

Men's: 8282 Black, 8182 Brown
Medium 7–11½, 12, 13, 14
Wide (black only) 8–11½, 12, 13, 14

CORPORATE PRICE
\$84⁹⁸
RETAIL PRICE \$117.49
SAVE 28%



NEW!

black wide sizes
Coming in April!

Empire – Composite Toe

Premium distressed oiled leather combines with the best features of an EH Rated™ boot.

For maximum protection and support, this waterproof boot features our patent pending SFC V-Grip™ outsole, a reinforced heel and padded collar. Removable cushioned insoles and inner lining keep feet comfortable. The polycarbonate composite toe meets ASTM standards.*

Men's: 8283 Black, 8183 Brown
Medium 4½–11½, 12, 13, 14

Women's: 8283 Black, 8183 Brown
Determine size using chart. Example:
women's size 8 should order men's size 6½.



CORPORATE PRICE
\$899⁹⁸
RETAIL PRICE \$125.49
SAVE 28%

WOMEN'S CONVERSION SIZE CHART	
4 1/2	6
5	6 1/2
5 1/2	7
6	7 1/2
6 1/2	8
7	8 1/2
7 1/2	9
8	9 1/2
8 1/2	10
9	10 1/2
9 1/2	11
10	11 1/2
10 1/2	12



FULLY NON-METALLIC
PASSES THROUGH METAL DETECTORS



Blackhawk – Composite Toe

Our puncture-resistant design keeps feet dry and protected.

This low-top, EH Rated™ boot boasts a durable non-metallic composite toe that meets approved ASTM standards.* It's water-resistant, made of full-grain leather and features our patent pending SFC V-Grip™ outsole. Removable cushioned insoles.

Men's: 8281 Black
Medium 4, 5–11½, 12, 13, 14, 15

Women's: 8281 Black
Determine size using chart. Example:
women's size 8 should order men's size 6½.



CORPORATE PRICE
\$69⁹⁸
RETAIL PRICE \$98.49
SAVE 29%

WOMEN'S CONVERSION SIZE CHART	
4	5 1/2
5	6 1/2
5 1/2	7
6	7 1/2
6 1/2	8
7	8 1/2
7 1/2	9
8	9 1/2
8 1/2	10
9	10 1/2
9 1/2	11
10	11 1/2
10 1/2	12

Ranger – Composite Toe

Defend yourself in slippery situations with a superior safety work boot.

This water-resistant, full-grain leather boot has a non-metallic composite toe and meets approved ASTM standards.* The EH Rated™ Ranger features our patent pending SFC V-Grip™ outsole, a puncture-resistant footbed and high-impact heel configuration. Removable cushioned insoles add comfort and support, while the textured reinforced toe provides extra protection and durability.

Men's: 8280 Black
Medium 4, 5–11½, 12, 13, 14, 15
Wide 8–11½, 12, 13, 14, 15

Women's: 8280 Black
Determine size using chart. Example:
women's size 8 should order men's size 6½.



CORPORATE PRICE
\$799⁹⁸
RETAIL PRICE \$112.49
SAVE 29%

BLACKHAWK & RANGER

*The steel toe and composite toe meet ASTM F-2413-11 standards bearing a class 75 rating.

**Electrical Hazard Protection (EH Rated) footwear meets ASTM standards by providing Electrical Shock Resistance protection for the entire work boot. The insulating properties are measured under dry conditions and may deteriorate with wear and in wet environments.

WEATHER ANY CONDITION IN CONFIDENCE



Bullfrog – Soft Toe

Ideal for cleanup crews, this 12" waterproof boot gets the job done.

Keep your feet dry in our durable, anti-bacterial rubber boots made from a high-grade EVA/rubber blend. The lightweight and flexible boot features our patented SFC Mighty Grip outsole. Easy to clean!

Men's: 5004 Black
Medium (whole sizes only) 4–15

Women's: 5004 Black
Determine size using chart. Example: women's size 8 should order men's size 6.



CORPORATE PRICE
\$34⁹⁸
RETAIL PRICE \$53.49
SAVE 35%



WOMEN'S CONVERSION SIZE CHART	
MEN'S 4	WOMEN'S 6
5	7
6	8
7	9
8	10
9	11
10	12

BULLFROG

NEW!

coming in May!

Bullfrog Pro – Soft Toe

Ideal for cleanup crews, this 12" waterproof boot gets the job done.

Keep your feet dry in our durable, anti-bacterial rubber boots made from a thick high-grade EVA/rubber blend. The lightweight and flexible boot features our patent pending SFC V-Grip™ outsole and a molded PU insole. Easy to clean!

Men's: 5005 Black
Medium (whole sizes only) 4–15

Women's: 5005 Black
Determine size using chart. Example: women's size 8 should order men's size 6.

CORPORATE PRICE
\$39⁹⁸
RETAIL PRICE \$63.49
SAVE 37%



WOMEN'S CONVERSION SIZE CHART	
MEN'S 4	WOMEN'S 6
5	7
6	8
7	9
8	10
9	11
10	12

BULLFROG PRO



HEAVY DUTY

16" TALL AND WATERPROOF



Guardian III – Steel & Soft Toe

Cut through the deepest mess with traction.

Move safely and comfortably through standing water in our heavy-duty waterproof, anti-bacterial boots that have removable cushioned insoles. They feature our patented SFC-5 anti-clogging outsole, and the steel toe meets ASTM standards.*

Steel Toe

Men's: 2060 Black, 2007 White, 2008 Green
Medium (whole sizes only) 4–14, (15, 16 black only)

Women's: 2060 Black 2007 White, 2008 Green
Determine size using chart. Example: women's size 8 should order men's size 6.

Soft Toe

Men's: 2062 Black
Medium (whole sizes only) 4–14

Women's: 2062 Black
Determine size using chart. Example: women's size 8 should order men's size 6.

CORPORATE PRICE
\$41⁹⁸
RETAIL PRICE \$66.49
SAVE 37%

WOMEN'S CONVERSION SIZE CHART	
MEN'S 4	WOMEN'S 6
5	7
6	8
7	9
8	10
9	11
10	12

GUARDIAN III



SLIP RESISTANT

SFC-5 ANTI-CLOGGING OUTSOLE

Styles that feature the Featherlight Technology icon are built with a lightweight flexible midsole or with a lightweight, durable, high-grade EVA/rubber blend that makes our shoes seem light as air.

INTRODUCING ACE WORK BOOTS™

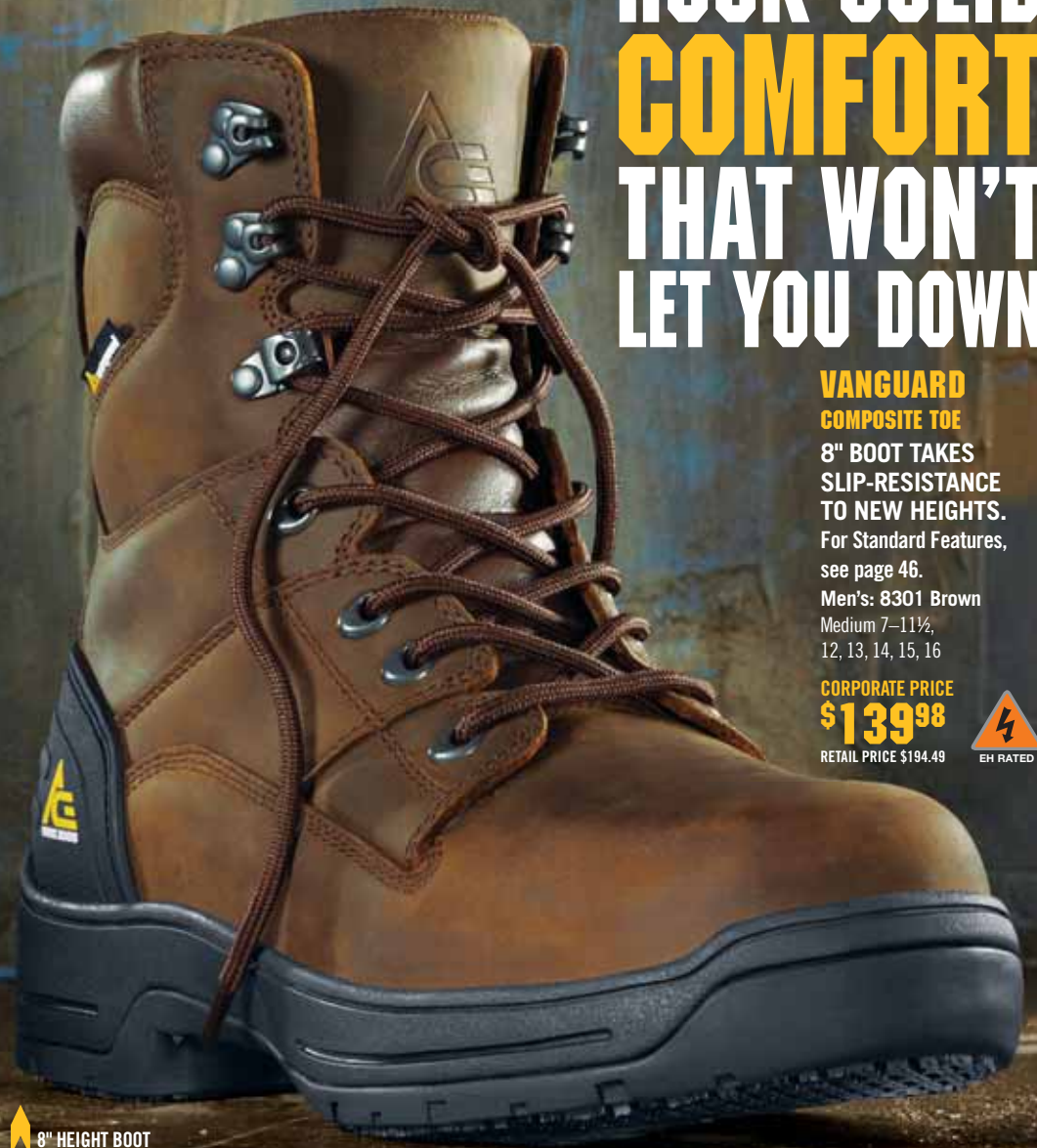


WORK BOOTS
OUTPERFORM > OUTLAST > OUTGRIP

INTRODUCING ACE WORK BOOTS™!

We started with legendary slip-resistant outsoles from SFC and worked our way up. Along the way, we made sure that everything from the premium leather to the high-tech construction made these the best boots you can buy for the money. So if you have a reputation to live up to at work, we have a boot that won't let you down. ACE WORK BOOTS.

ROCK SOLID COMFORT THAT WON'T LET YOU DOWN



VANGUARD COMPOSITE TOE

8" BOOT TAKES
SLIP-RESISTANCE
TO NEW HEIGHTS.
For Standard Features,
see page 46.

Men's: 8301 Brown
Medium 7–11½,
12, 13, 14, 15, 16

CORPORATE PRICE
\$139⁹⁸
RETAIL PRICE \$194.49



8" HEIGHT BOOT



ATLAS COMPOSITE TOE
OUR LIGHTEST WORK BOOT SACRIFICES NOTHING IN COMFORT OR PERFORMANCE.

Men's: 8300 Brown
Medium 7-11½, 12, 13, 14, 15, 16
Wide 8-11½, 12, 13, 14, 15, 16



CORPORATE PRICE
\$129⁹⁸
RETAIL PRICE \$180.49

LIGHTWEIGHT



STANDARD FEATURES

- PATENT PENDING SFC V-GRIP™ OUTSOLE
- DEFINED HEEL, NON-MARKING OUTSOLE
- WATERPROOF
- BREATHABLE INNER LINING
- ASTM COMPOSITE SAFETY TOE*
- ELECTRICAL HAZARD (EH) RATED**
- PREMIUM, FULL-GRAIN LEATHER UPPER
- ACE CUSHION & SUPPORT SYSTEM
- HIGH-GRADE HARDWARE
- PADDED COLLAR
- REINFORCED HEEL

DAKOTA WOMEN'S COMPOSITE TOE
RUGGED DURABILITY PERFECT FOR A WOMAN.

CORPORATE PRICE
\$129⁹⁸
RETAIL PRICE \$180.49

Women's: 8302 Brown
Medium 5-9½, 10, 11



BUILT ESPECIALLY FOR WOMEN



SFC V-GRIP™ OUTSOLE

Slip-resistant outsole is specially engineered to keep you on your feet in extreme conditions... even in cold weather.



MERCURY COMPOSITE TOE
MAXIMUM WEAR PROTECTION MAKES THIS OUR TOUGHEST WORK BOOT.

Men's: 8304 Black, 8303 Brown
Medium 7-11½, 12, 13, 14

CORPORATE PRICE
\$139⁹⁸
RETAIL PRICE \$194.49



REINFORCED HEEL & TOE



VICTOR COMPOSITE TOE
OUR SLIP-RESISTANT TAKE ON A CLASSIC GOODYEAR WELT CONSTRUCTION.

Men's: 8306 Black
8305 Brown
Medium 7-11½, 12, 13, 14

CORPORATE PRICE
\$124⁹⁸
RETAIL PRICE \$174.49



* The steel toe and composite toe meet ASTM F-2413-11 standards bearing a class 75 rating.

** Electrical Hazard Protection (EH Rated) footwear meets ASTM standards by providing Electrical Shock Resistance protection for the entire work boot. The insulating properties are measured under dry conditions and may deteriorate with wear and in wet environments.

SAVE OVER 35% HURRY WHILE SUPPLIES LAST

Daphne LIMITED SUPPLY

Strap into this multifunctional shoe designed for hours of comfort.

Women's: 9044 Black
Medium 4, 5-9½, 10, 11



CLEARANCE PRICE
\$36.00

RETAIL PRICE \$59.77

Euro Clog LIMITED SUPPLY

A European design that's versatile and durable.

Women's: 9055 Black
Medium 5-9½, 10, 11, 12
Wide 6½-9½, 10



CLEARANCE PRICE
\$48.00

RETAIL PRICE \$77.97

Hawk II LIMITED SUPPLY

A casual style with incredible grip complemented by sleek lines.

Men's: 8022 Black
Medium 7-11½, 12, 13, 14, 15
Women's: 9022 Black
Medium 5-9½, 10, 11



CLEARANCE PRICE
\$32.00

RETAIL PRICE \$51.97

Blaze LIMITED SUPPLY

Make a statement with this trend-setting slip-on.

Women's: 7011 Black
Medium 5-9½, 10, 11
Wide 6½-9½, 10, 11



CLEARANCE PRICE
\$27.00

RETAIL PRICE \$45.47

TWX LIMITED SUPPLY

Inspired by long-distance running shoes, this sporty model raises the bar.

Men's: 8020 Black
Medium 7-10½, 11, 12, 13, 14, 15
Wide 8-10½, 11, 12, 13



CLEARANCE PRICE
\$39.00

RETAIL PRICE \$64.97

Element LIMITED SUPPLY

A contemporary, upscale style with crisscross Velcro® straps.

Women's: 9039 Black
Medium 4, 5-9½, 10, 11



CLEARANCE PRICE
\$41.00

RETAIL PRICE \$64.97

Allure LIMITED SUPPLY

A tailored wedge you can count on for complete comfort.

Women's: 3604 Black
Medium 5-9½, 10, 11



CLEARANCE PRICE
\$45.00

RETAIL PRICE \$74.07

Grace LIMITED SUPPLY

A sophisticated style paired with our legendary outsole.

Women's: 3608 Black
Medium 5-9½, 10



CLEARANCE PRICE
\$32.00

RETAIL PRICE \$51.97

Roxanne Women's Steel Toe LIMITED SUPPLY

Safety of a steel toe, comfort of a slip-on and simplicity of Velcro®.

Women's: 3900 Black
Medium 5-9½, 10, 11



CLEARANCE PRICE
\$45.00

RETAIL PRICE \$74.07

Alpine Soft Toe LIMITED SUPPLY

Built for comfort and durability, this welted construction boot is ready to work.

Men's: 8284 Black
Medium 7-11½, 12, 13, 14



CLEARANCE PRICE
\$69.00

RETAIL PRICE \$116.97

Synergy LIMITED SUPPLY

Slip into total comfort and safety.

Women's: 3803 Black
Medium 4, 5-9½, 10, 11



CLEARANCE PRICE
\$54.00

RETAIL PRICE \$87.07

Power LIMITED SUPPLY

Tear through your workday and improve overall wellness.

Men's: 8042 Black
Medium 7-11½, 12, 13



CLEARANCE PRICE
\$54.00

RETAIL PRICE \$87.07

Styles that feature the Featherlight Technology icon are built with a lightweight flexible midsole or with a lightweight, durable, high-grade EVA/rubber blend that makes our shoes seem light as air. Look for the purple Featherlight icon for our lightest styles.

Electrical Hazard Protection (EH Rated) footwear meets ASTM standards by providing Electrical Shock Resistance protection for the entire work boot. The insulating properties are measured under dry conditions and may deteriorate with wear and in wet environments.

WOMEN'S CONVERSION SIZE CHART

MEN'S 4	5	WOMEN'S
5	6	
6	7	
7	8	
8	9	
9	10	
10	11	
11	12	

SFC FROGGZ® PRO

SFC Froggz® Pro

The perfect addition to your work shoe collection.

Men's: 5008 Black, 5009 White
Medium (whole sizes only) 4-13,
(14 black only)

Women's: 5008 Black, 5009 White
Determine size using chart.
Example: women's size 8 should
order men's size 7.

More details on page 16



CORPORATE PRICE
\$29⁹⁸
RETAIL PRICE \$45.49
SAVE 34%



WOMEN'S CONVERSION SIZE CHART

MEN'S 4	6	WOMEN'S
5	7	
6	8	
7	9	
8	10	
9	11	
10	12	

SFC FROGGZ® CLASSIC II



SFC Froggz® Classic II

This versatile style is a trusted all-around favorite.

Men's: 5010 Black, 5011 White
Medium (whole sizes only) 4-13, (14, 15 black only)

Women's: 5010 Black, 5011 White
Determine size using chart.
Example: women's size 8 should order men's size 6.

More details on page 16



CORPORATE PRICE
\$24⁹⁸
RETAIL PRICE \$37.49
SAVE 33%

TOP SAFE STYLES
under
\$30

Pro-Classic IV

Outstanding grip action combined with all-day comfort.

Men's: 6005 Black
Medium 7-10½, 11, 12, 13, 14
Wide 7½-10½, 11, 12, 13

Women's: 7005 Black
Medium 4, 5-9½, 10, 11, 12
Wide 6½-9½, 10
More details on page 13

CORPORATE PRICE
\$26⁹⁸
RETAIL PRICE \$37.49
SAVE 28%



Panther II

Combine fashion and function with this sleek slip-on.

Men's: 6011 Black
Medium 7-11½, 12, 13, 14
Wide 7½-10½, 11, 12, 13

More details on page 13

CORPORATE PRICE
\$29⁹⁸
RETAIL PRICE \$45.49
SAVE 34%



Zoe

Style and comfort at a price you'll appreciate. This low profile women's athletic style features our patented slip-resistant outsole.

Women's: 7013 Black
Medium 5-9½, 10, 11
More details on page 12

CORPORATE PRICE
\$29⁹⁸
RETAIL PRICE \$45.49
SAVE 34%



Zeke

This sleek, low profile men's athletic style, with our patented slip-resistant outsole, is a superb value.

Men's: 6013 Black
Medium 7-11½, 12, 13, 14
More details on page 13

CORPORATE PRICE
\$29⁹⁸
RETAIL PRICE \$45.49
SAVE 34%



Talon II

Streamlined comfort meets our reliable, patented SFC Mighty Grip outsole.

Men's: 8032 Black
Medium 7-11½, 12, 13, 14, 15
More details online

CORPORATE PRICE
\$29⁹⁸
RETAIL PRICE \$45.49
SAVE 34%



Freestyle

Workplace safety gets a clean, classic look.

Men's: 6010 Black
Medium 7-10½, 11, 12, 13, 14
Wide 7½-10½, 11, 12, 13

Women's: 7010 Black
Medium 5-9½, 10, 11
Wide 6½-9½, 10, 11
More details on page 12

CORPORATE PRICE
\$26⁹⁸
RETAIL PRICE \$37.49
SAVE 28%



Genna

This low-profile women's athletic style, with our patented slip-resistant outsole, is an economical alternative for those on a tight budget.

Women's: 7012 Black
Medium 5-9½, 10, 11
More details on page 12

CORPORATE PRICE
\$29⁹⁸
RETAIL PRICE \$45.49
SAVE 34%



SEE CLEARANCE STYLES ON PAGES 48-49!

PRSRPT STD
US POSTAGE
PAID
SHOES FOR
CREWS



THE SHOE THAT GRIPS®

250 South Australian Avenue
West Palm Beach, FL 33401

CONNECT
with SFC:



PDP Vol. A1A

Use this key code

Account No.



SHOP OUR
**MOBILE
WEB SITE**

Shop online, see new arrivals, exclusive discounts,
learn about our 60-Day Guarantee & lots more.

Scan this QR code with your smartphone,
or visit shoesforcrews.com/catalogmobile



Force

only \$59⁹⁸

Men's: 8044 Black
page 5



Rio

by **topcrews™**

only \$59⁹⁸

Women's: 4303 Black
page 21

ORDER TODAY! 1.800.523.4448

shoesforcrews.com

ORDENE HOY! 1.800.523.4448 shoesforcrews.com/es



THE OFFICIAL WORK SHOE OF PENKSE RACING

For more on our partnership with Penske Racing, check out shoesforcrews.com/racing.